

Tackling Repeat Victimisation

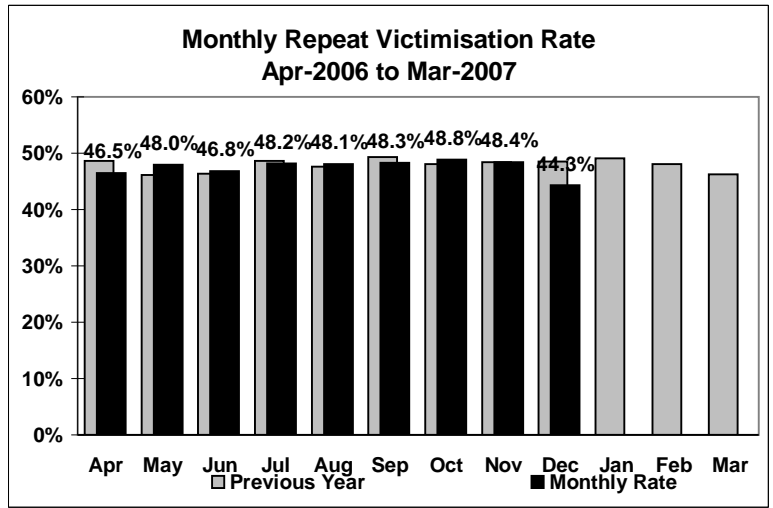
Certain people and locations are at greater risk of crime than others. Some, such as the very young and the elderly, need special support when they are victims of crime. West Yorkshire Police are committed to taking firm action against those who commit violence against particularly vulnerable victims, vigorously investigating cases, and where evidence exists, prosecuting offenders.

Because risk can increase, rather than decrease, with each offence, vulnerable people and premises can suffer repeat victimisation. West Yorkshire has pioneered repeat victimisation schemes. Those who have recently experienced more than one crime (of house burglary, domestic violence or racist attack) are offered an extremely high standard of care and are provided with a range of services aimed at preventing recurrences. Arrangements for the identification and monitoring of the response provided to repeat victims will be enhanced when the new computerised vulnerable victims database being developed in West Yorkshire goes live during 2003/004.

Force - December 2006

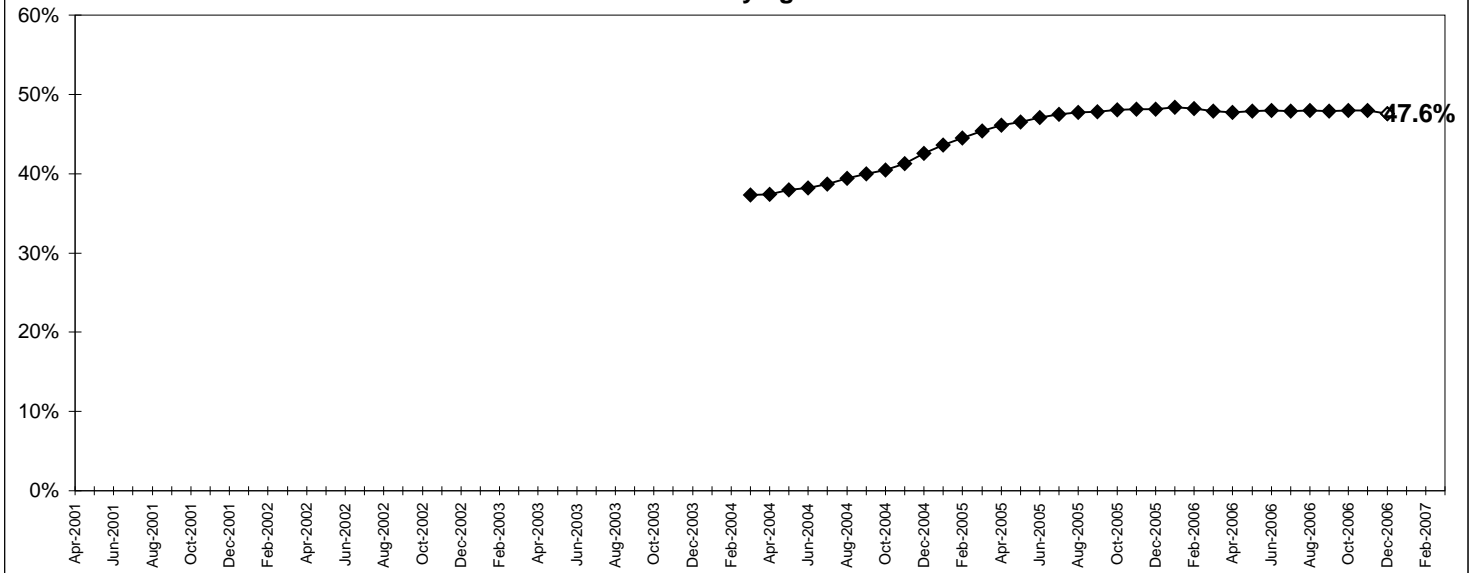
TARGET - REDUCE THE PERCENTAGE OF DOMESTIC VIOLENCE VICTIMS WHO ARE REPEAT VICTIMS

	Incidents		% Repeats	
	2005/2006	2006/2007	2005/2006	2006/2007
Apr	2672	2914	48.6%	46.5%
May	2974	3034	46.1%	48.0%
Jun	2868	3108	46.4%	46.8%
Jul	3182	3487	48.6%	48.2%
Aug	3074	3016	47.6%	48.1%
Sep	2813	3020	49.3%	48.3%
Oct	3141	2749	48.1%	48.8%
Nov	2834	2567	48.4%	48.4%
Dec	3159	2990	48.6%	44.3%
Jan	2928		49.1%	
Feb	2553		48.0%	
Mar	2659		46.3%	
Total to Dec	26717	26885	47.9%	47.5%



Comments:

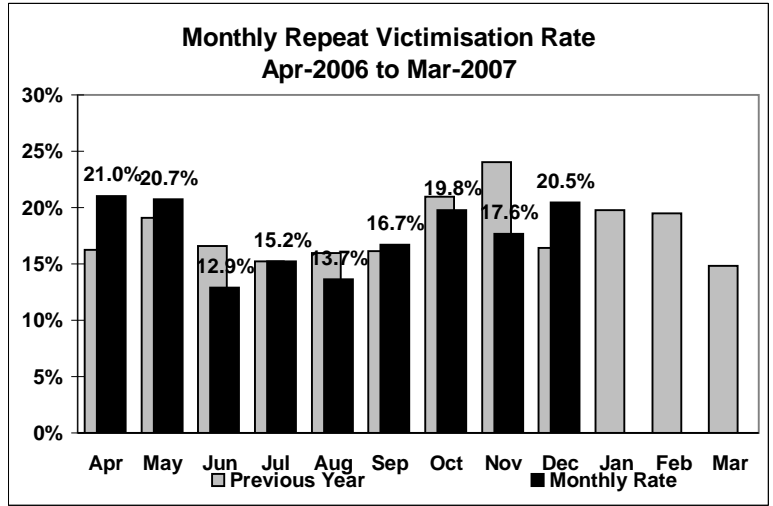
TRENDS IN DOMESTIC VIOLENCE REPEAT VICTIMISATION RATE 12-monthly figures



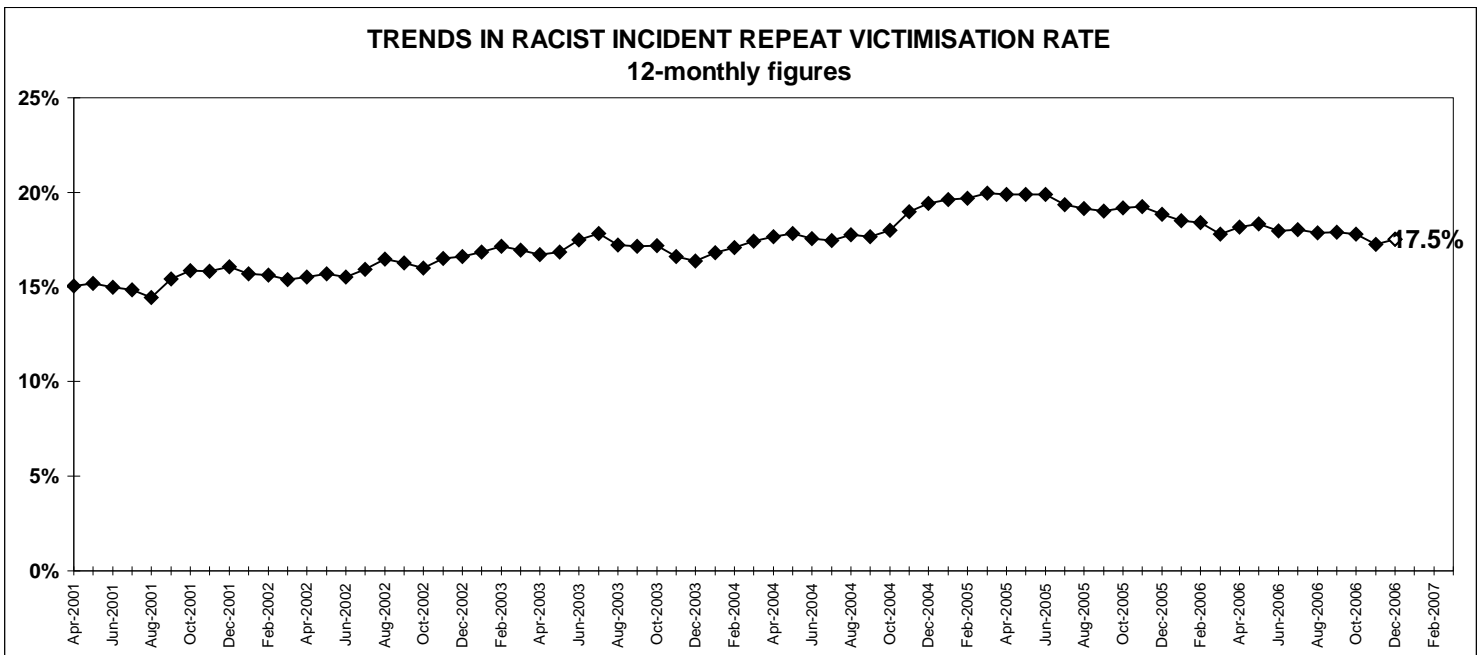
Force - December 2006

TARGET - REDUCE THE PERCENTAGE OF RACIST INCIDENT VICTIMS WHO ARE REPEAT VICTIMS

	Incidents		% Repeats	
	2005/2006	2006/2007	2005/2006	2006/2007
Apr	246	295	16.3%	21.0%
May	241	333	19.1%	20.7%
Jun	277	334	16.6%	12.9%
Jul	401	335	15.2%	15.2%
Aug	357	315	16.0%	13.7%
Sep	316	335	16.1%	16.7%
Oct	310	293	21.0%	19.8%
Nov	312	323	24.0%	17.6%
Dec	268	249	16.4%	20.5%
Jan	314		19.7%	
Feb	277		19.5%	
Mar	350		14.9%	
Total to Dec	2728	2812	17.8%	17.4%



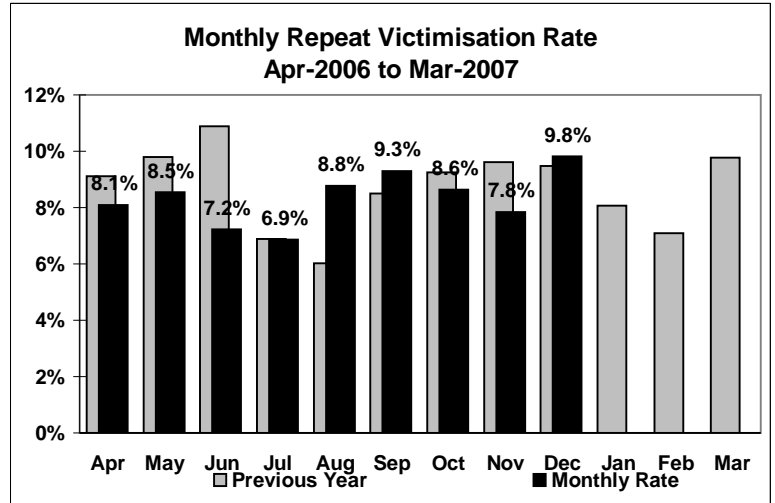
Comments:



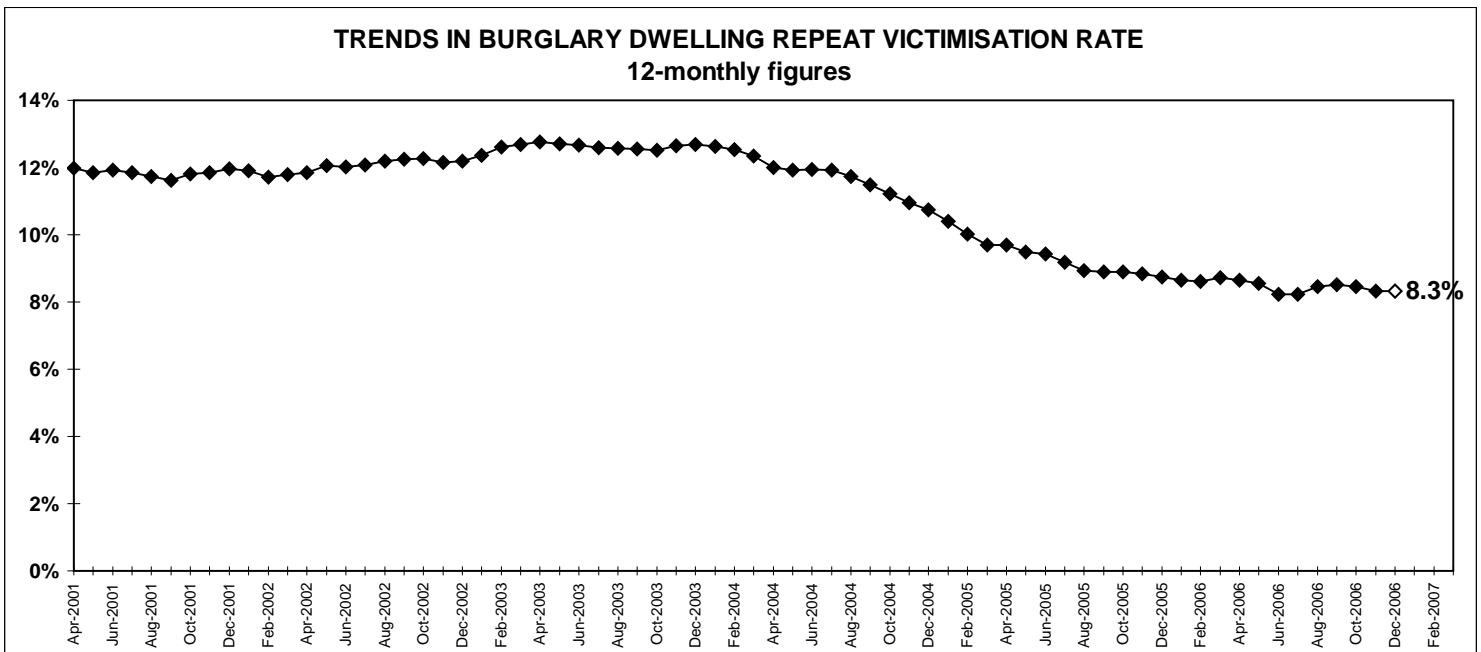
Force - December 2006

TARGET - REDUCE THE PERCENTAGE OF BURGLARY DWELLING VICTIMS WHO ARE REPEAT VICTIMS

	Repeat Incidents		% Repeats	
	2005/2006	2006/2007	2005/2006	2006/2007
Apr	116	101	9.1%	8.1%
May	129	114	9.8%	8.5%
Jun	159	100	10.9%	7.2%
Jul	95	103	6.9%	6.9%
Aug	83	131	6.0%	8.8%
Sep	113	131	8.5%	9.3%
Oct	134	120	9.2%	8.6%
Nov	139	109	9.6%	7.8%
Dec	140	116	9.5%	9.8%
Jan	124		8.1%	
Feb	95		7.1%	
Mar	139		9.8%	
Total to Dec	1108	1025	8.9%	8.3%



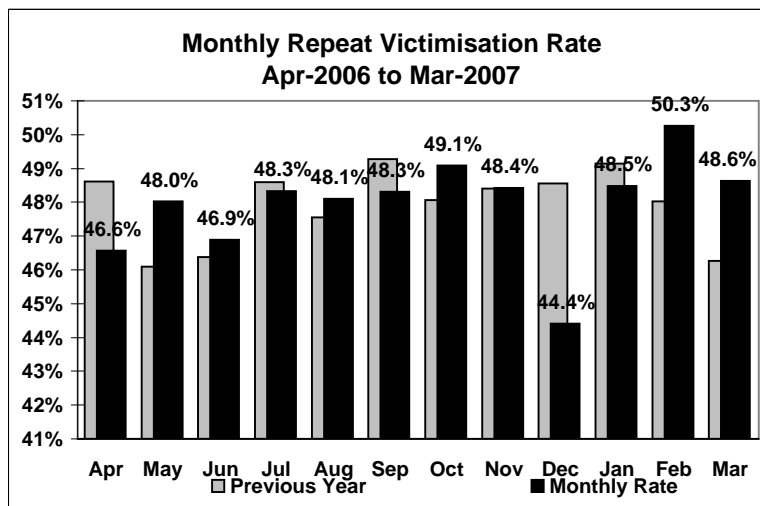
Comments:



Force - March 2007

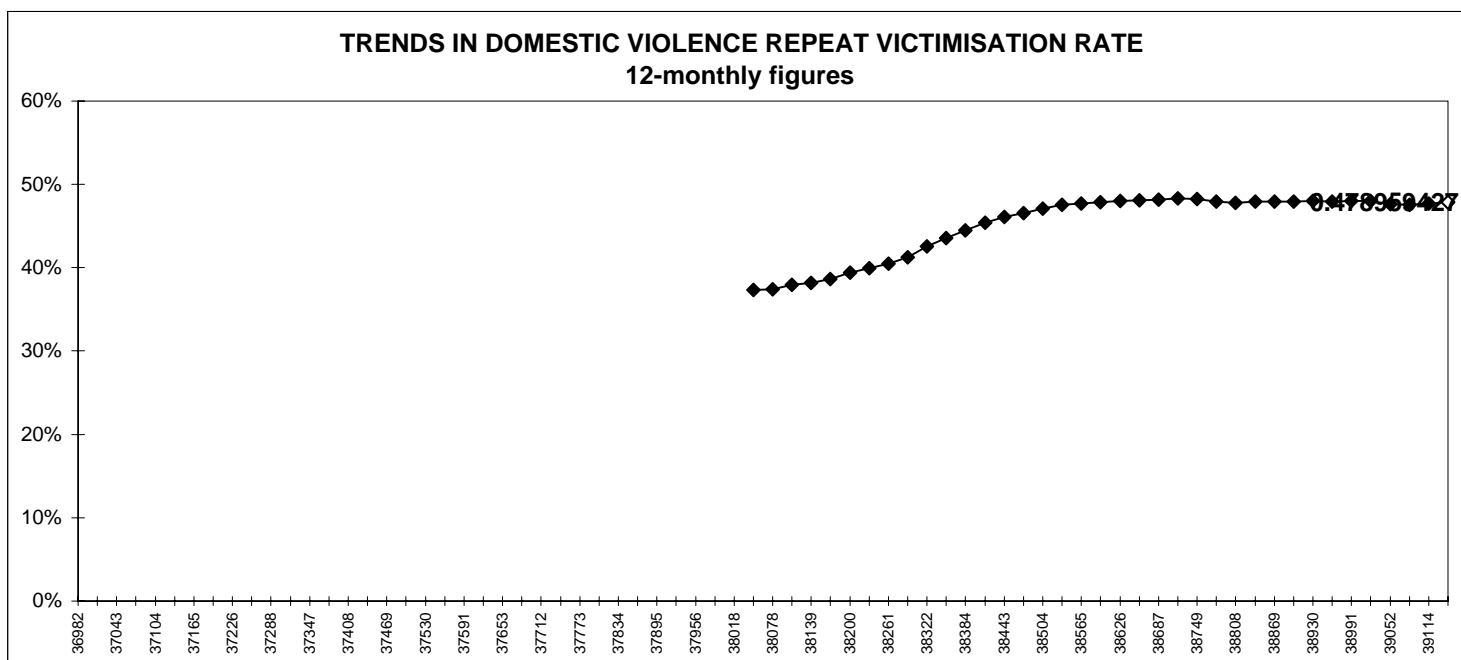
TARGET - REDUCE THE PERCENTAGE OF DOMESTIC VIOLENCE VICTIMS WHO ARE REPEAT VICTIMS

	Incidents		% Repeats	
	2005/2006	2006/2007	2005/2006	2006/2007
Apr	2672	2914	48.6%	46.6%
May	2974	3034	46.1%	48.0%
Jun	2868	3109	46.4%	46.9%
Jul	3182	3487	48.6%	48.3%
Aug	3074	3016	47.6%	48.1%
Sep	2813	3020	49.3%	48.3%
Oct	3141	2748	48.1%	49.1%
Nov	2834	2567	48.4%	48.4%
Dec	3159	2992	48.6%	44.4%
Jan	2928	2714	49.1%	48.5%
Feb	2553	2324	48.0%	50.3%
Mar	2659	2556	46.3%	48.6%
Total to Mar	34857	34481	47.9%	47.9%



Comments:

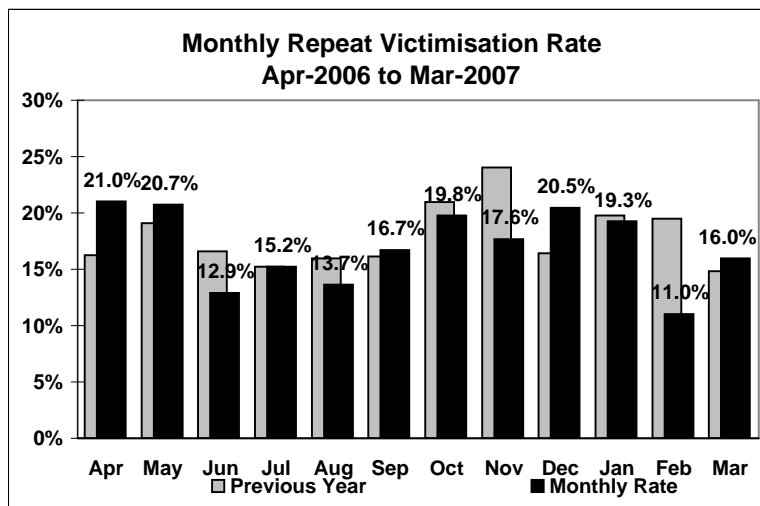
TRENDS IN DOMESTIC VIOLENCE REPEAT VICTIMISATION RATE 12-monthly figures



Force - March 2007

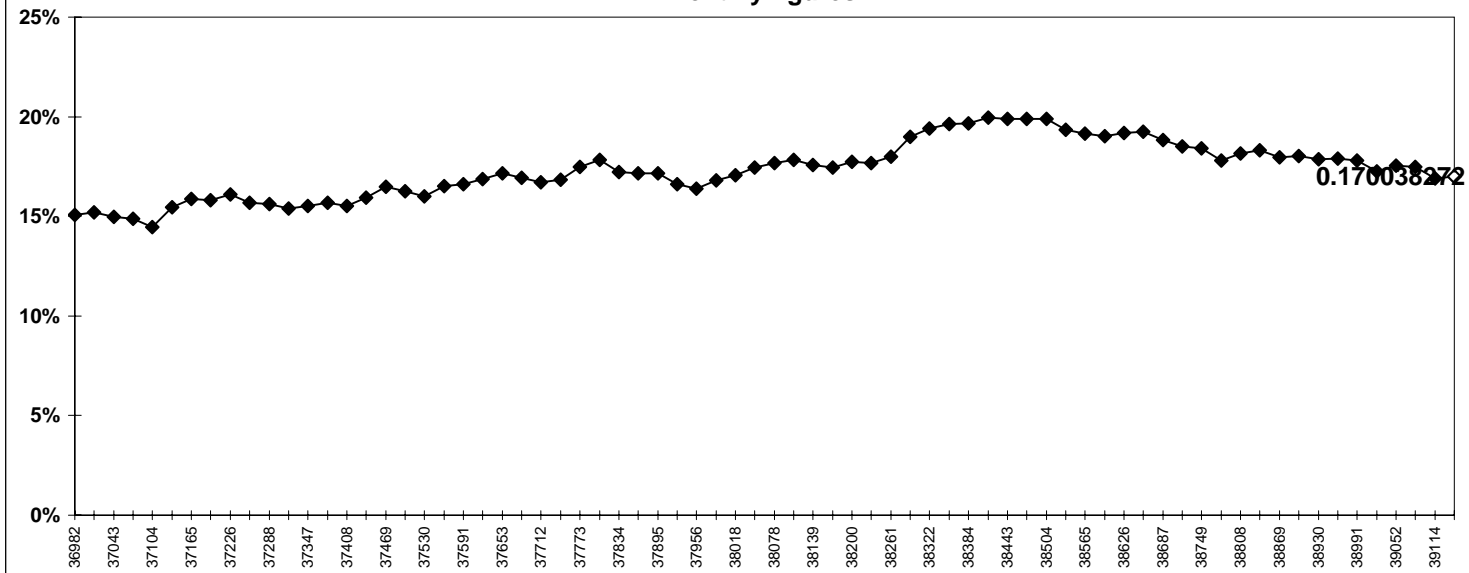
TARGET - REDUCE THE PERCENTAGE OF RACIST INCIDENT VICTIMS WHO ARE REPEAT VICTIMS

	Incidents		% Repeats	
	2005/2006	2006/2007	2005/2006	2006/2007
Apr	246	295	16.3%	21.0%
May	241	333	19.1%	20.7%
Jun	277	334	16.6%	12.9%
Jul	401	335	15.2%	15.2%
Aug	357	315	16.0%	13.7%
Sep	316	335	16.1%	16.7%
Oct	310	293	21.0%	19.8%
Nov	312	323	24.0%	17.6%
Dec	268	249	16.4%	20.5%
Jan	314	275	19.7%	19.3%
Feb	277	245	19.5%	11.0%
Mar	350	326	14.9%	16.0%
Total to Mar	3669	3658	17.8%	17.0%



Comments:

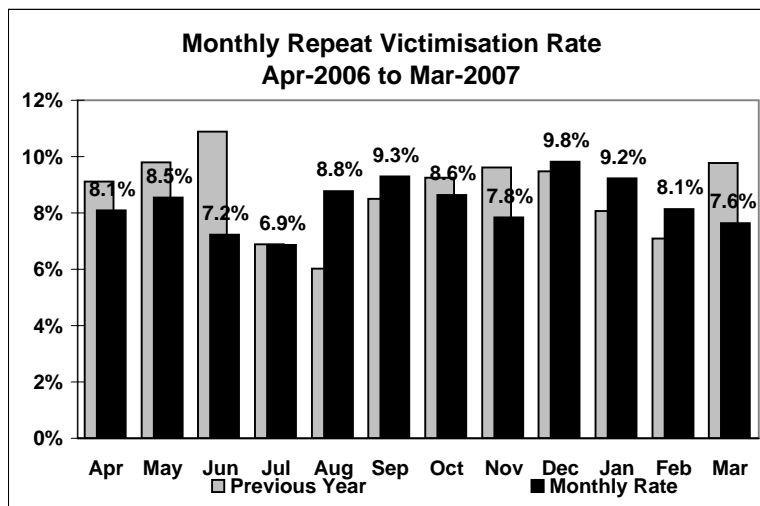
TRENDS IN RACIST INCIDENT REPEAT VICTIMISATION RATE
12-monthly figures



Force - March 2007

TARGET - REDUCE THE PERCENTAGE OF BURGLARY DWELLING VICTIMS WHO ARE REPEAT VICTIMS

	Repeat Incidents		% Repeats	
	2005/2006	2006/2007	2005/2006	2006/2007
Apr	116	101	9.1%	8.1%
May	129	114	9.8%	8.5%
Jun	159	100	10.9%	7.2%
Jul	95	103	6.9%	6.9%
Aug	83	131	6.0%	8.8%
Sep	113	131	8.5%	9.3%
Oct	134	120	9.2%	8.6%
Nov	139	109	9.6%	7.8%
Dec	140	116	9.5%	9.8%
Jan	124	118	8.1%	9.2%
Feb	95	80	7.1%	8.1%
Mar	139	86	9.8%	7.6%
Total to Mar	1466	1309	8.7%	8.3%



Comments:

TRENDS IN BURGLARY DWELLING REPEAT VICTIMISATION RATE 12-monthly figures

